

STAINLESS STEEL 316L

PRESS FIT FITTINGS

(M PROFILE)

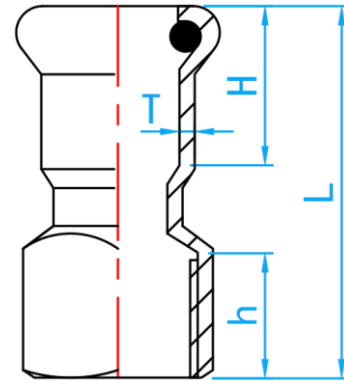


A Product of the nPressGuard® Solution



COMPLY WITH BSEN1254-2: 1998

FI SOCKET



CROSS SECTIONAL VIEW

STANDARD SPECIFICATION

Working Pressure	16 Bar
Working Temperature	0 ~ 85°C
Applications	Hot and cold potable water system.

DIMENSIONS

SKU	SIZE (mm x inch)	L(mm)	H(mm)	h(mm)	T (mm)	WEIGHT(kg)	PCS/CTN
SS316LFIA01515	15 × 1/2" BSP	52	20	15.5	1.5	0.050	300
SS316LFIA02015*	22 × 1/2" BSP	50	20	15.5	1.5	0.055	240
SS316LFIA02020	22 × 3/4" BSP	50	21	16.0	1.5	0.070	170
SS316LFIA02515*	28 × 1/2" BSP	65	23	15.5	1.5	0.075	100
SS316LFIA02520*	28 × 3/4" BSP	54	23	16.0	1.5	0.080	100
SS316LFIA02525	28 × 1" BSP	57	23	20.0	1.5	0.110	120
SS316LFIA03515*	35 × 1/2" BSP	72	26	15.5	1.5	0.095	80
SS316LFIA03520*	35 × 3/4" BSP	70	26	16.0	1.5	0.110	70
SS316LFIA03525*	35 × 1" BSP	64	26	20.0	1.5	0.180	80
SS316LFIA03535	35 × 1 1/4" BSP	65	26	22.0	1.5	0.150	75
SS316LFIA03542*	35 × 1 1/2" BSP	77	26	25.0	1.5	0.185	60
SS316LFIA04215	42 × 1/2" BSP	80	31	15.5	1.5	0.134	120
SS316LFIA04220*	42 × 3/4" BSP	77	31	16.0	1.5	0.135	120
SS316LFIA04225*	42 × 1" BSP	80	31	20.0	1.5	0.155	100
SS316LFIA04235*	42 × 1 1/4" BSP	70	31	22.0	1.5	0.170	100
SS316LFIA04242	42 × 1 1/2" BSP	71	31	25.0	1.5	0.200	60
SS316LFIA04250*	42 × 2" BSP	90	31	25.0	1.5	0.280	50
SS316LFIA05015	54 × 1/2" BSP	90	36	15.5	1.5	0.170	70
SS316LFIA05020*	54 × 3/4" BSP	90	36	16.0	1.5	0.178	60
SS316LFIA05025*	54 × 1" BSP	92	36	20.0	1.5	0.205	60
SS316LFIA05035*	54 × 1 1/4" BSP	92	36	22.0	1.5	0.229	60
SS316LFIA05042*	54 × 1 1/2" BSP	92	36	25.0	1.5	0.246	36
SS316LFIA05050	54 × 2" BSP	84	35	25.0	1.5	0.285	36
SS316LFIA06515	67 × 1/2" BSP	111	50	15.5	1.8	0.310	28
SS316LFIA06550*	67 × 2" BSP	115	50	25.0	1.8	0.435	15
SS316LFIA06565	67 × 2 1/2" BSP	115	50	28.0	1.8	0.570	15
SS316LFIA08015	76 × 1/2" BSP	120	51	15.5	2.0	0.405	24
SS316LFIA10015	108 × 1/2" BSP	153	75	15.5	2.0	0.810	10

*This item requires special ordering. Please consult with a salesperson for the estimated lead time.